



Sheraton®

ON THE PARK

EPITOME
OF

Style

AND
LUXURY



Australia's Leading
Hotel Suite



Superior Surrounds

Sheraton on the Park is located in the heart of Sydney, opposite magnificent Hyde Park and close to premium shopping and sightseeing.

With 557 meticulously designed guest rooms including 48 luxuriously appointed suites, Sheraton on the Park welcomes the most discerning guests into a home-away-from-home sanctuary of refined ambiance. All guest rooms offer spectacular city and park views, while most suites have private terraces overlooking Sydney's Middle Harbour, St Mary's Cathedral and Hyde Park.

The five star property boasts extensive dining options including the signature restaurant Feast – a world of flavours, with an award-winning international seafood buffet and the elegant Gallery Tea Lounge featuring traditional High Tea.

On The Park Rejuvenation Day Spa on level 22 is an urban oasis to unwind and rejuvenate the spirit with luxurious body and beauty treatment rooms with Thalgo and Aroma Associate products. The rooftop swimming pool and health club offer spectacular vistas of the city and Sydney's historic Hyde Park.

Sheraton on the Park's premium suites include the Terrace Spa Suite with a large white marble bathroom with a luxurious Spa Bath at the centre, the elegant Hyde Park Suites, the Deluxe Terrace Suites with ultra-modern décor perfect for entertaining, the Ambassador Suite with a unique design bringing the sense of journey to mind, as well as the Royal Suite the ultimate 'New York' penthouse style accommodation.

All guests staying in the suites have access to the Sheraton Club on level 21, providing the perfect setting to relax with friends or catch up on business. The benefits of the Sheraton Club include continental breakfast, pre-dinner drinks and canapés each evening, afternoon tea on weekends, Wi-Fi Internet access, and use of the Sheraton Club Boardroom for an hour per stay. Personalised check in, 24-hour butler service and a range of additional packages from romance to indulgence create those truly memorable occasions.



Feast

feast
a world of flavours

Experience Feast – a world of flavours, the signature buffet restaurant at Sheraton on the Park. Overlooking picturesque Hyde Park, the setting is befitting of a daytime meal, family gathering or an intimate dinner for two. Feast features large secluded booths, communal dining tables, a private dining room, al-fresco terrace and an intimate lounge to gather with friends.

At Feast, the energy of the kitchen and the spirit of fabulous food come together in one place: with an open plan kitchen for live interactive cooking and a stone hearth oven as the centre piece for creative cuisine.

The diversity of flavours is immense: meats and seafood grilled to perfection, the best of pristine Australian produce, fresh roasts and gourmet pizza as well as local favourites that feature authentic tastes and new presentations – the food reflects the wonderful melting pot of cultures we live in today. The open kitchens serve up the freshest food a la minute, while the buffet-style displays encourage an interactive dining experience. The dazzling range of desserts tops all expectations of sweet indulgences and promises to offer the greatest variety in town – it will be delicious from the first little nibble to the last sweet crumb.

The finest selection of international wines from the Sheraton “Wines of the World” program will complete the wide range of food options to create an exquisite meal for any occasion.



On The Park Rejuvenation Day Spa

On The Park Rejuvenation Day Spa, located on level 22 at Sheraton on the Park, is a place to relax, restore energy and experience a perfect little getaway – if short or long, as single or with friends, when travelling for business or leisure.

Relaxing and invigorating services, stunning views from the rooftop terrace over Hyde Park and beyond and state-of-the-art facilities make On The Park Rejuvenation a beautiful place high above the city – but still in the middle of its heartbeat.

The facilities on level 22 include a rooftop swimming pool with adjacent terrace and sun lounges, a fully-equipped health club, sauna and steam room as well as five treatment rooms, most overlooking the lush greenery of the city below.

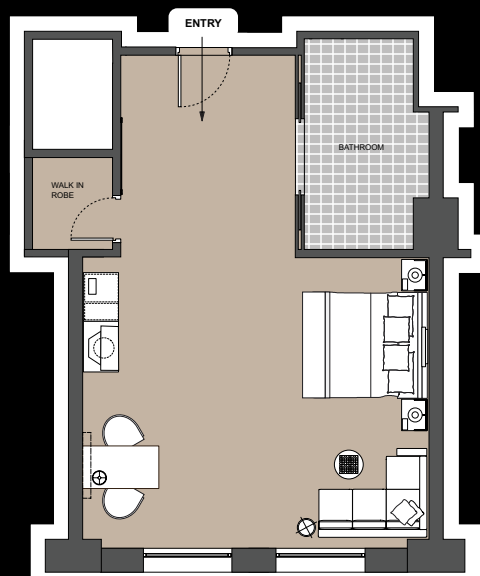
The spa services are exquisitely designed to provide ultimate nourishment for body and spirit. A range of traditional and exotic massages, beautiful body wraps and scrubs, luxurious facials or the grooming basics like manicure and pedicure can fill a full day with pure relaxation.

Let us create memorable experiences worth repeating – as a hotel guest or for just a couple of hours – On The Park Rejuvenation Day Spa sets the tone for an exclusive Spa experience in the heart of Sydney.



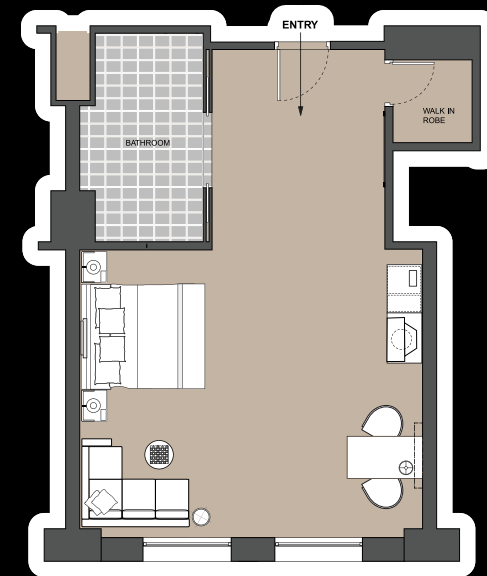
City Side & Hyde Park View Rooms 40m²

- Sheraton Sweet Sleeper King sized bed or two single beds, black marble bathroom, comfortable lounge area, generous writing desk, flat screen LCD TV, DVD Player, blackout blinds, data port and in-room safe
- City Side rooms overlooking the cityscape and Hyde Park rooms overlooking Hyde Park
- City Side rooms - 239 rooms, located on every floor
- Hyde Park View rooms - 191 rooms, located on every floor



Executive City Side & Hyde Park View Rooms 40m²

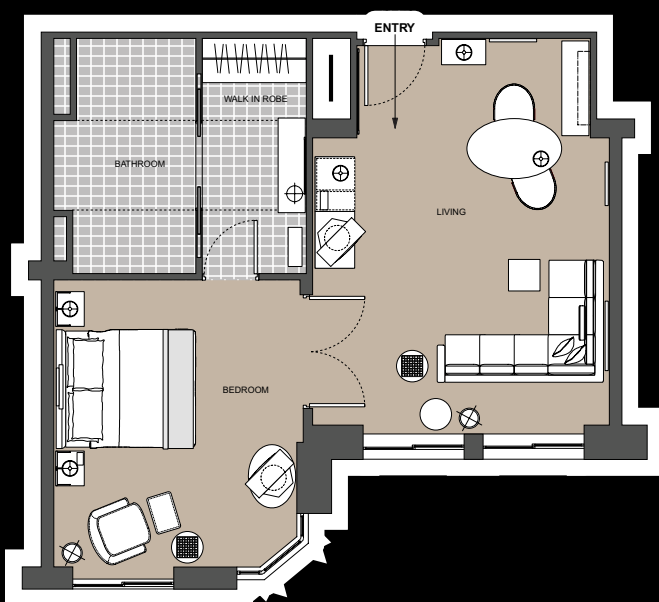
- Sheraton Sweet Sleeper King sized bed or two single beds, black marble bathroom, comfortable lounge area, generous writing desk, flat screen LCD TV, DVD Player, black out blinds, data port and in-room safe
- Complimentary access to the Sheraton Club on Level 21
- City Side rooms - 50 rooms, located on Levels 5-20
- Hyde Park View rooms - 29 rooms, located on Levels 5-20





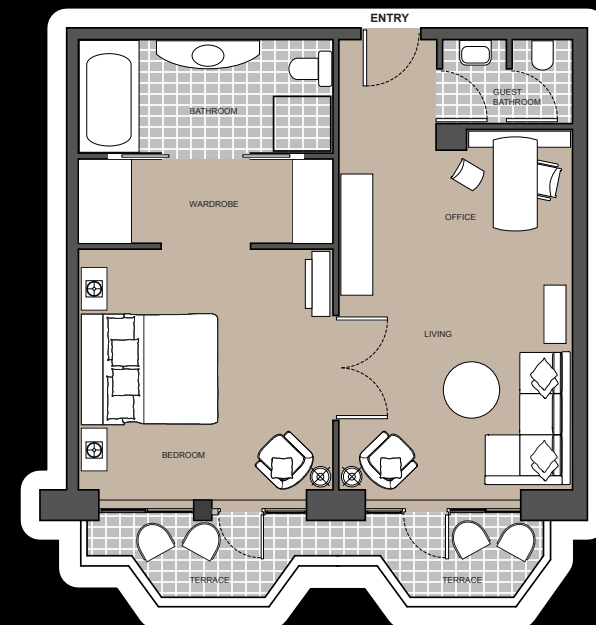
Executive Suites 70m²

- Sheraton Sweet Sleeper King sized bed, black marble bathroom with luxurious bathroom amenities, spacious lounge area, generous writing desk, two large LCD TV's teamed with a BOSE sound system, DVD player, black out curtains, data port and in-room safe
- Complimentary access to the Sheraton Club on Level 21
- 31 suites, located on Levels 5-20



Terrace Suite 80m²

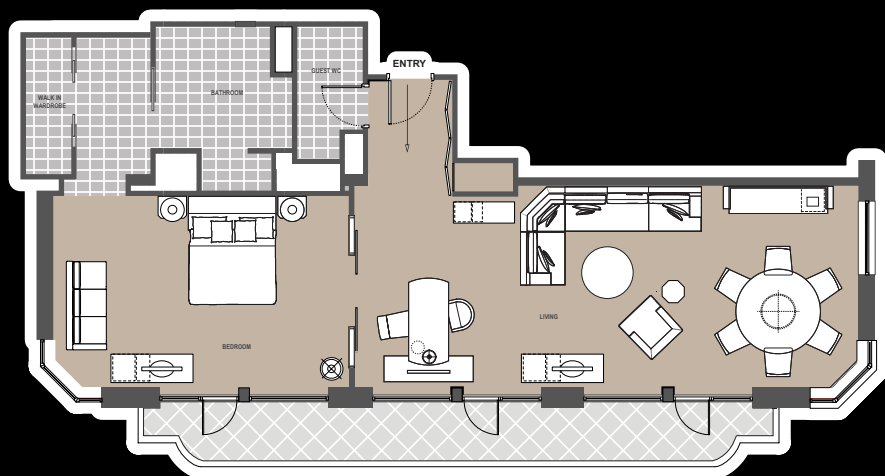
- Decorated in a stylish palette of cream, black and jewel tones
- Sheraton Sweet Sleeper King sized bed, black marble bathroom with luxurious bathroom amenities, beautifully appointed lounge area, two flat screen LCD TV's and BOSE sound system, DVD player, large writing desk, black out curtains, data port and in-room safe
- Private Terrace overlooking majestic Hyde Park
- Complimentary access to the Sheraton Club on Level 21
- 8 suites, located on Levels 16-20





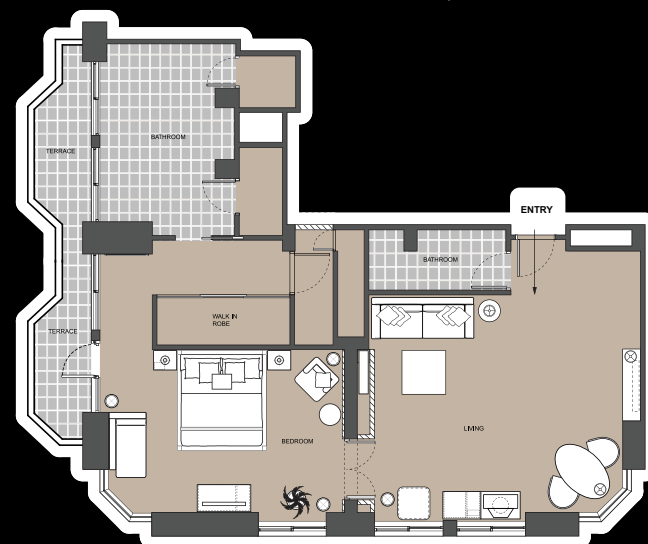
Deluxe Terrace Suite 120m²

- A luxurious and personal residential ambiance created by a color scheme selected from warm mocha for the carpets, silver-green wall coverings, deep chocolate and terra cotta
- Sheraton Sweet Sleeper King sized bed and spacious lounge area furnished with luxuriant sofa and chairs, while the adjacent dining area is a perfect venue for entertaining or conferencing
- A quiet and efficient space to work, the study area is fully equipped with a large work desk, high-speed Internet connectivity and stationery, all ideal for the discerning business traveller
- Black marble bathroom with luxurious amenities
- Private Terrace overlooking majestic Hyde Park
- Complimentary access to the Sheraton Club on Level 21
- 4 suites, located on Levels 17 & 18



Terrace Spa Suite 90m²

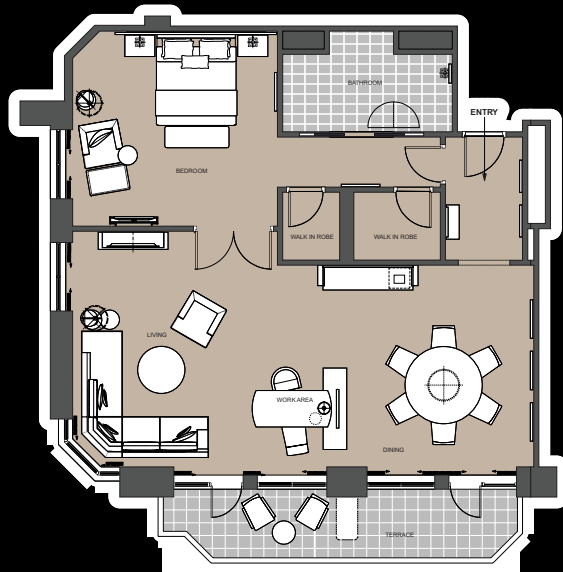
- Custom designed furnishings made from rich chocolate timber and sumptuous fabrics of bronze, gold and warm touches of teal
- Elegant lounge area, two flat screen LCD TV's and BOSE sound system, DVD Player, tailor-made writing desk with leather seating, black out curtains, data port and in-room safe
- Chic master bedroom, Sheraton Sweet Sleeper King sized bed, white marble bathroom with a spa bath and twin vanities, luxurious bathroom amenities
- Private Terrace with sun lounges overlooking Hyde Park and Sydney's Middle Harbour
- Complimentary access to the Sheraton Club on Level 21
- 1 suite, located on Level 18





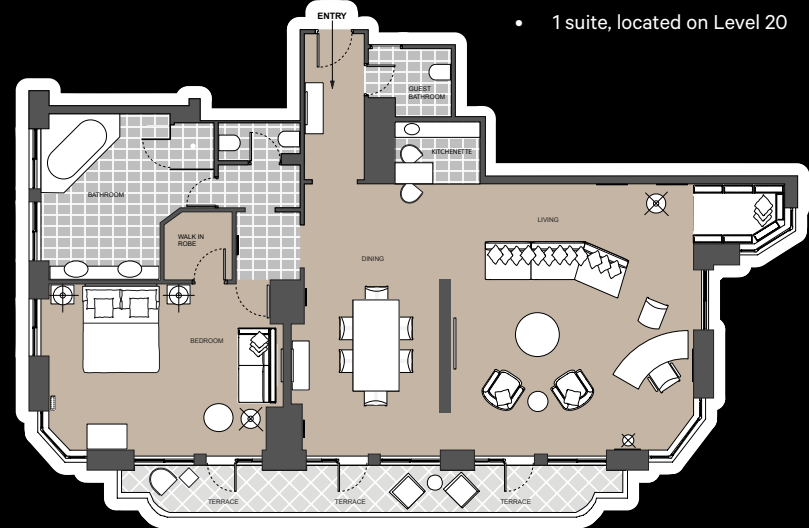
Hyde Park Suite 130m²

- Chocolate Wenge timber, warm neutrals and ruby red accents
- Luxuriant lounge area, comfortable corner sofa, large plasma screen television and BOSE sound system. Generous executive desk with leather seating
- Spacious master bedroom, Sheraton Sweet Sleeper King sized bed, plush reading area, integrated 32" plasma TV screen and a bedside DVD player
- Chrome European tap-ware in the beautiful marble bathroom and luxurious bathroom amenities
- Complimentary access to the Sheraton Club on Level 21
- 2 suites, located on Level 19



The Ambassador Suite 170m²

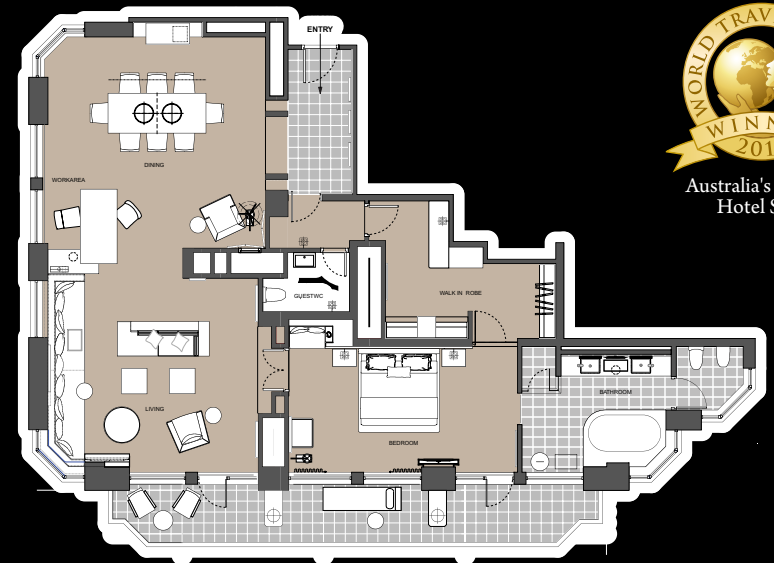
- Recently refurbished, emphasising residential comfort and modern living, complete with a luxurious kitchenette – the interior is evoking a sense of the “romantic grand voyage”
- Expansive lounge area comprising of a large lounge and two armchairs, window seat, 6 seat dining table and private powder room
- Sumptuous Sheraton Sweet Sleeper King sized bed, marble bathroom with a spa bath, double vanities and luxurious bathroom amenities
- Three picturesque terraces overlooking Majestic Hyde Park, St Mary's Cathedral and Sydney's Middle Harbour
- Can be converted to a two-bedroom suite with the adjoining City Side Room
- Complimentary access to the Sheraton Club on Level 21
- 1 suite, located on Level 20





The Royal Suite 205m²

- The Hotel's premier suite, a contemporary New York style penthouse apartment filled with natural light
- Sleek dining setting for eight, an opulent lounge area with plush 5m long window seat, custom-made executive desk, iPod docking station, 2 large plasma screens teamed with a BOSE sound system and DVD player
- Sheraton Sweet Sleeper King sized bed, spacious walk-in dressing area, butler's entry, Calcutta marble bathroom with double vanity, LCD TV Screen, large spa bath, rain shower and luxurious bathroom amenities
- Can be converted to a two-bedroom suite with the adjoining City Side Room
- Complimentary access to the Sheraton Club on Level 21
- 1 suite, located on Level 21



Awards & Accolades

- **2015 TOURISM ACCOMMODATION AUSTRALIA (NSW) Awards for Excellence** – Brasserie/Café of the year (Hall of Fame Recipient)
- **2014 WORLD TRAVEL AWARDS** – Australia's Leading Hotel Suite: The Royal Suite
- **2014 TOURISM ACCOMMODATION AUSTRALIA (NSW) Awards for Excellence** – Brasserie/Café of the Year (Hall of Fame Recipient)
- **2013, 2012 HM AWARDS** - Australia's Best Meetings & Conference Property
- **2013 TOURISM ACCOMMODATION AUSTRALIA (NSW) Awards for Excellence** – Workplace Health & Safety Hotel of the Year (Hall of Fame Recipient)
- **2012, 2011, 2010, 2007 NEW SOUTH WALES TOURISM AWARDS** – Best Luxury Accommodation (Hall of Fame Recipient)
- **2012, 2011 WORLD TRAVEL AWARDS** – Australasia's Leading Hotel
- **2011 TOURISM ACCOMMODATION AUSTRALIA (NSW) Awards for Excellence** – Function Venue of the Year (Hall of Fame Recipient)
- **2010 WORLD TRAVEL AWARDS** – Australia's Leading Hotel



SHERATON ON THE PARK
161 Elizabeth Street
Sydney, NSW 2000
Australia
T 02 9286 6000

sheratonsydney.com