

# Ace Hotel Sydney





## ACE HOTEL SYDNEY

Our very first spot south of the equator, Ace Hotel Sydney lives in a rejuvenated, hundred-year-old Heritage Federation Warehouse building — home to the first kiln discovery in Australia — nestled against the edge of the CBD in Surry Hills.

Inspired by the neighbourhood's multicultural confluence of industry and residential living, Ace Sydney is foremost a communal space — a nexus point where our neighbours and visitors can intersect, and where the past and future coalesce.









## NEIGHBOURHOOD



A place of extraordinary contrasts and community, our home of Surry Hills is a microcosm of Sydney's singular character; its meandering streets establishing a rhythm of creation and innovation that rings across the city, the country and the rest of the world.

Ace Sydney welcomes the electricity of the city inside, cultivating a call and response with the community around us and a two-way channel for creativity, collaboration and culture. We're walking distance to Hyde Park and the CBD, Darlinghurst and Redfern, and just a moment away from Central Station, which can take you just about anywhere you'd want to go.



## EVENT SPACES



Flexible enough to suit all sorts of social situations — meetings, weddings, birthday parties, whatever — our events spaces include a pair of multifunctional medium-sized rooms (Clay and Tyne) good for gatherings of about 40 people, plus a great big space (Brick) that can manage meet-ups of approximately 120 guests.

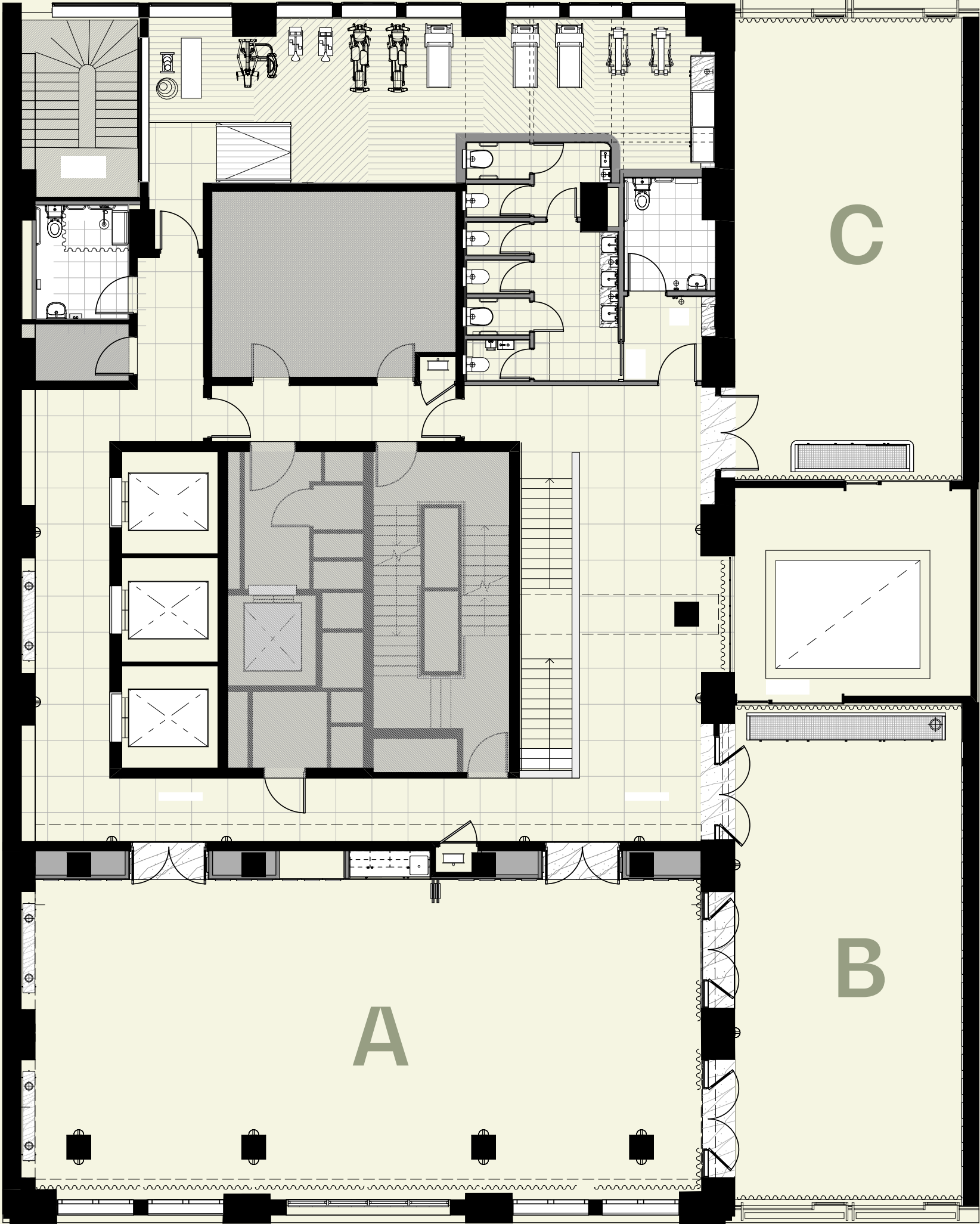
Those looking for something extra special can choose from space at our rooftop, three distinct ground-floor food and beverage venues or our remarkable Ace Suite for intimate soirées of all stripes.





EVENT SPACES

- A - BRICK
- B - CLAY
- C - TYNE



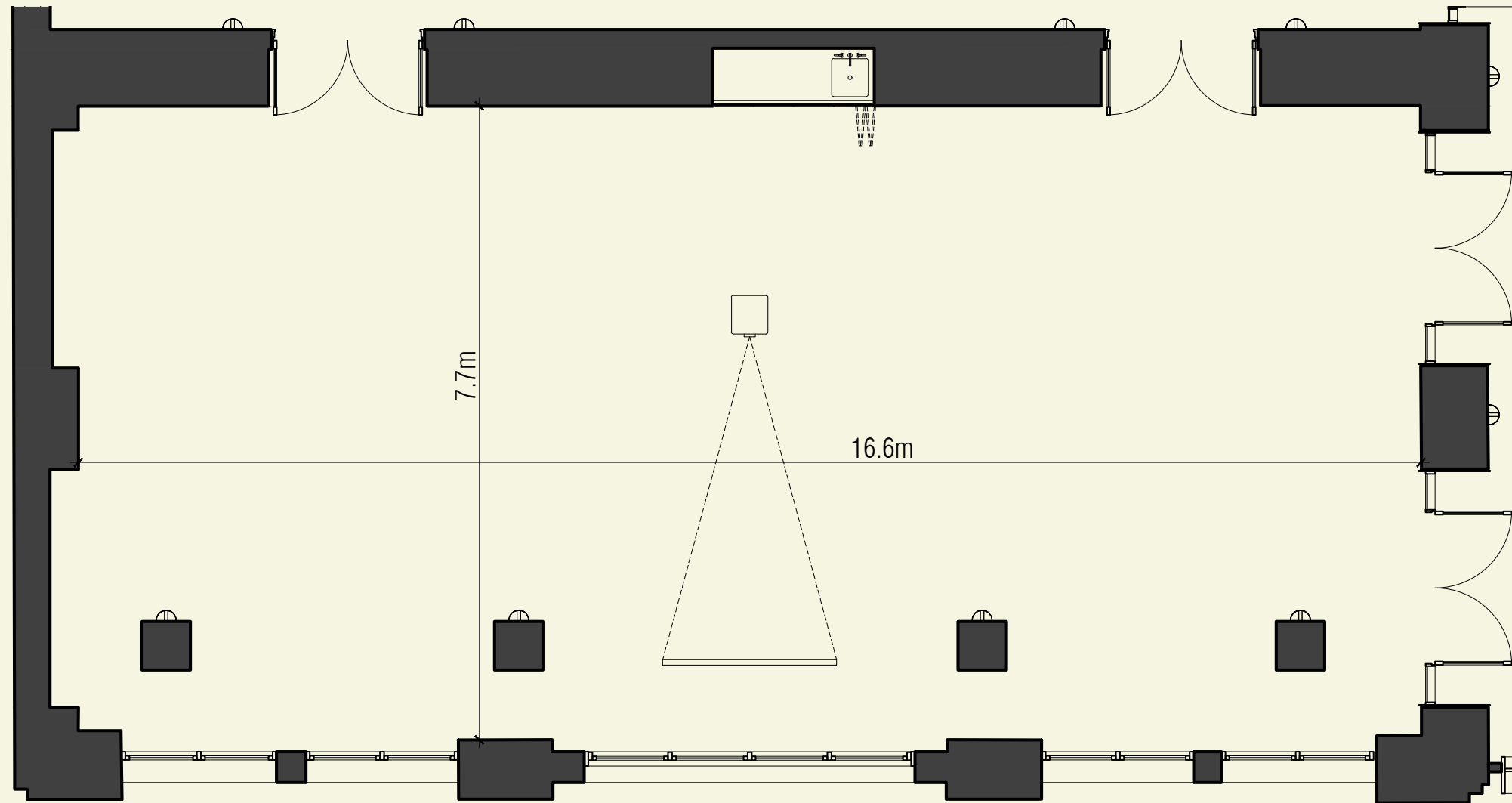


# EVENT SPACES

EVENT SPACE	CABARET	KINGS TABLE	BOARDROOM	U SHAPE	THEATRE	CLASSROOM	ROUNDS	COCKTAIL	SQM / SQF	CEILING HEIGHT M / FT
BRICK	72	52	40	36	120	63	90	150	130 sq m / 1400 sq ft	3.2m / 10.5ft
CLAY	24	22	22	22	46	36	40	50	70m / 753 sq ft	3.1m / 10.2ft
TYNE	24	22	22	22	46	36	40	40	66m / 710 sq ft	3.1m / 10.2ft



# BRICK



**Brick:** 130 sq m / 1400 sq ft

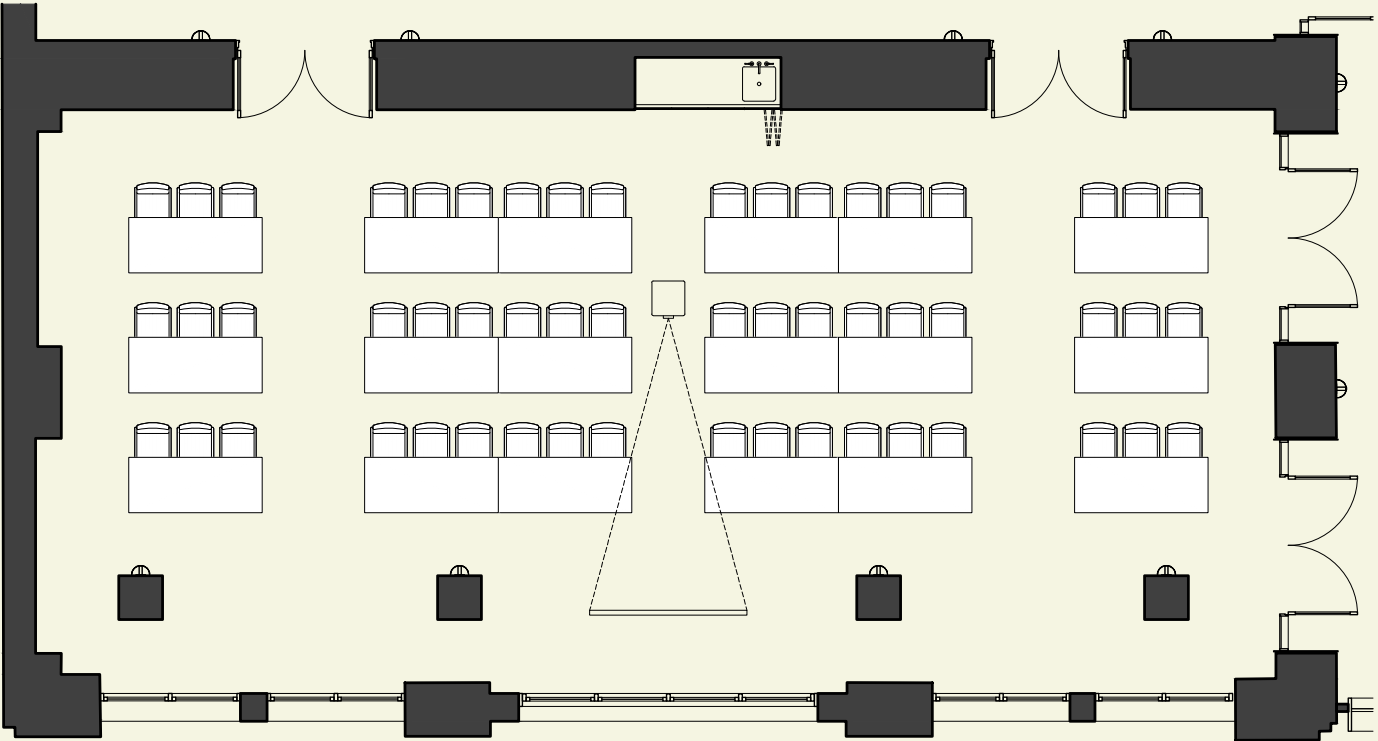
High ceilings, ample space and Surry Hills views define our space for weddings, product launches and blow-out celebrations. With room for up to 120 guests, Brick comfortably hosts large gatherings and, for those really looking to go all out, can expand to accommodate even the biggest groups when opened up and adjoined with Clay.

## Audio Visual Inclusions

- Projector
- Built-in JBL speaker system
- Motorised 100" drop-down screen
- Two 75" TVs
- Handheld and lapel microphones
- Customised lighting scenes



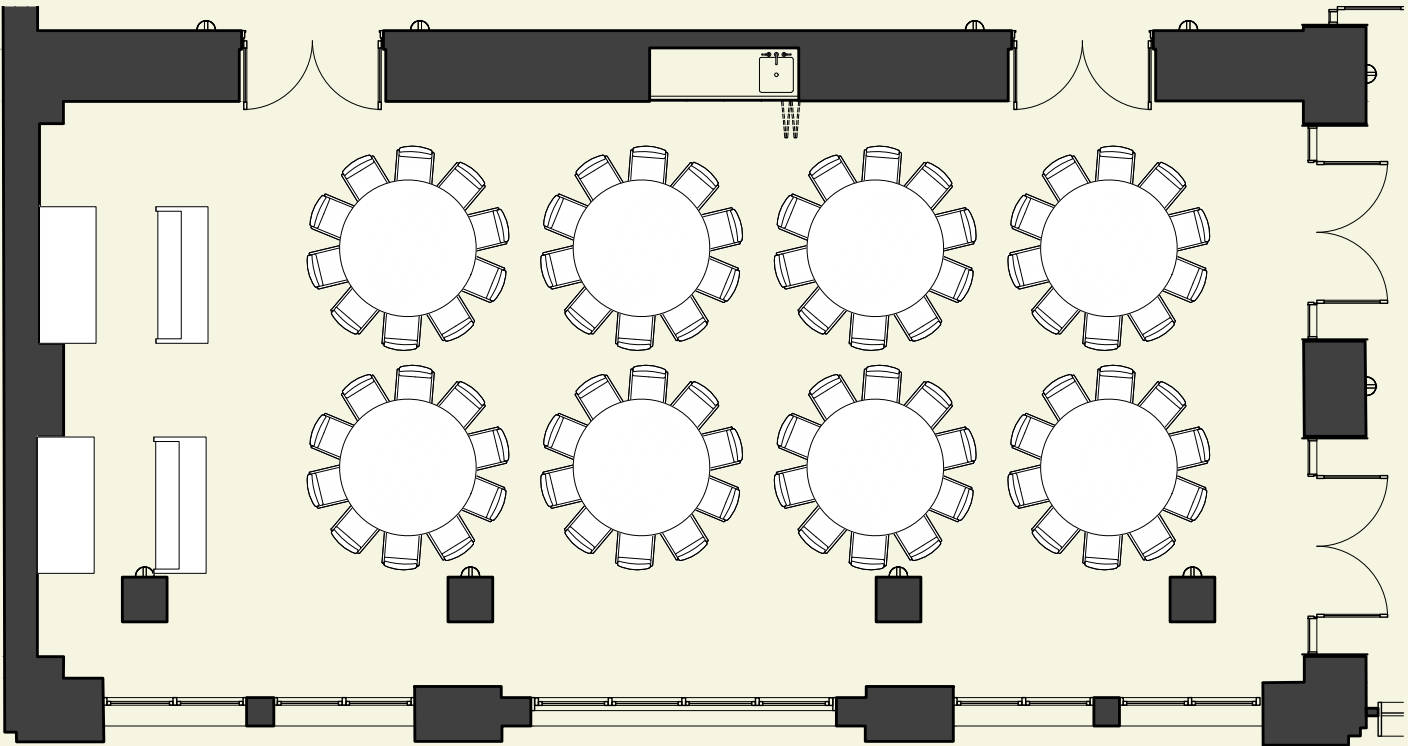
BRICK



Capacity: 60

CLASSROOM

BRICK



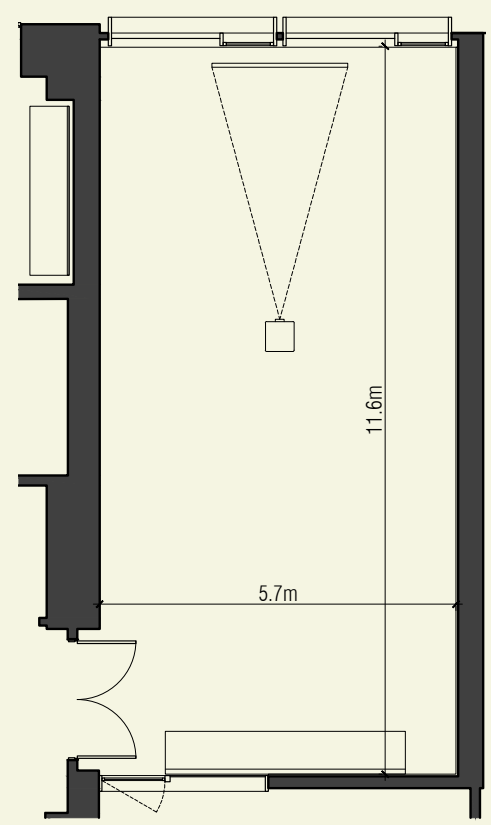
Capacity: 90

BANQUET

BRICK

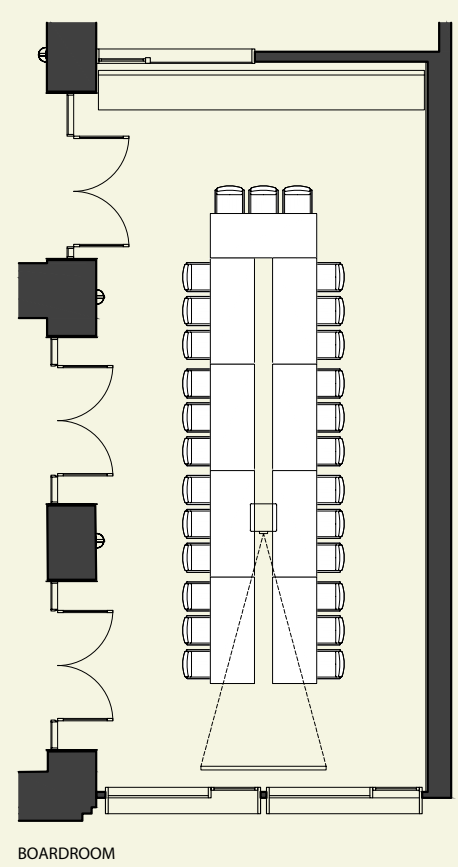


# TYNE/CLAY



**Tyne:** 66 sq m / 710 sq ft

A large, versatile level-one space with high ceilings and wide windows for soaking in sunlight. Tyne is highly adaptable and fit for everything from lavish receptions and weddings to low-key lunches and get-togethers.



**Capacity:** 24

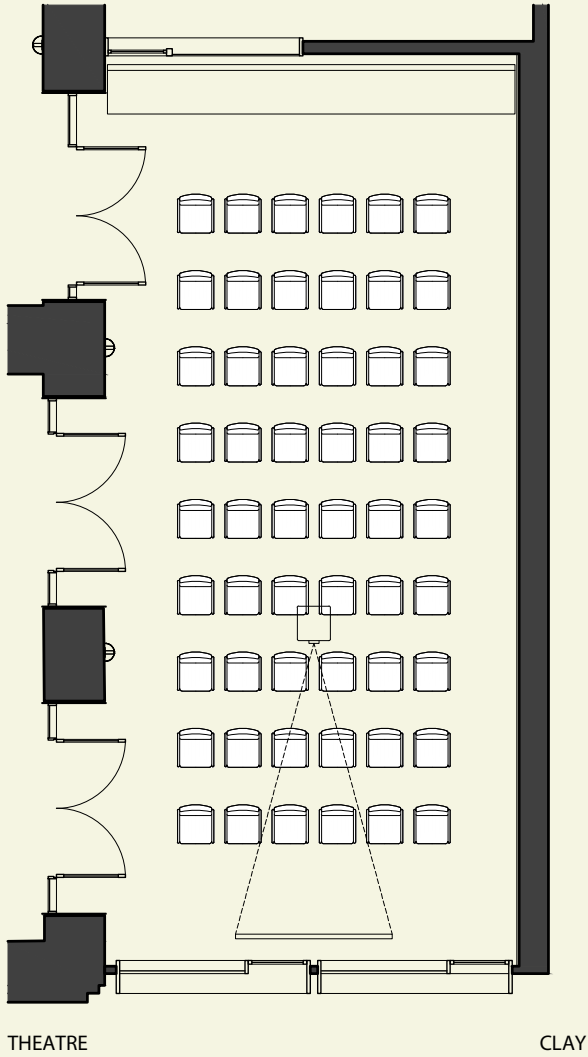
**Clay:** 70 sq m / 753 sq ft

A sun-filled space for everything from team meetings to cocktail parties, invite-only dinners and intimate events. Featuring high ceilings and views of the surrounding Surry Hills neighbourhood, Clay is nicely sized for a special guest list.

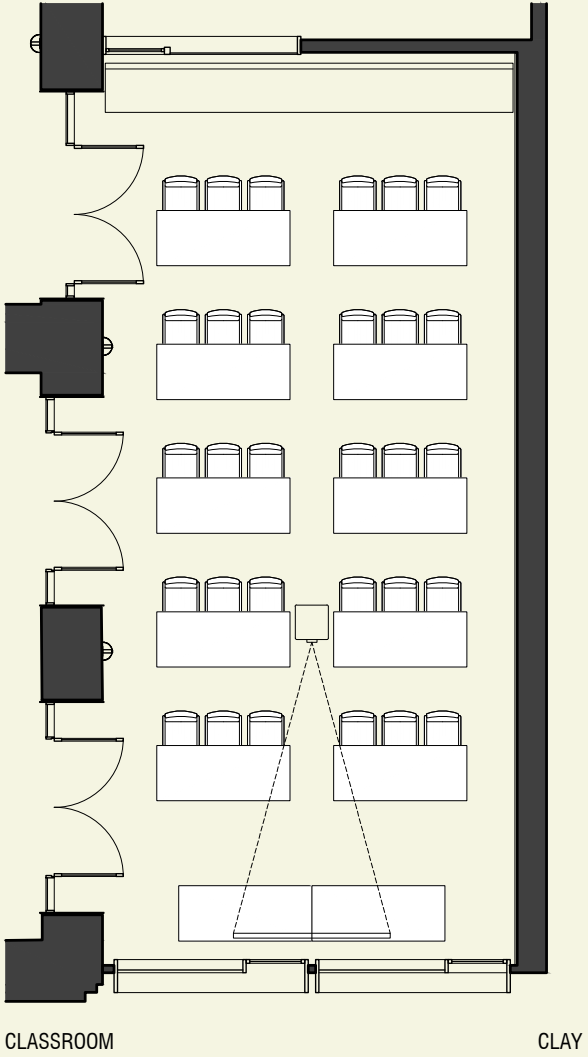
## Audio Visual Inclusions

- Projector
- Built-in JBL speaker system
- Motorised 100” drop-down screen
- Handheld and lapel microphones
- Customised lighting scenes

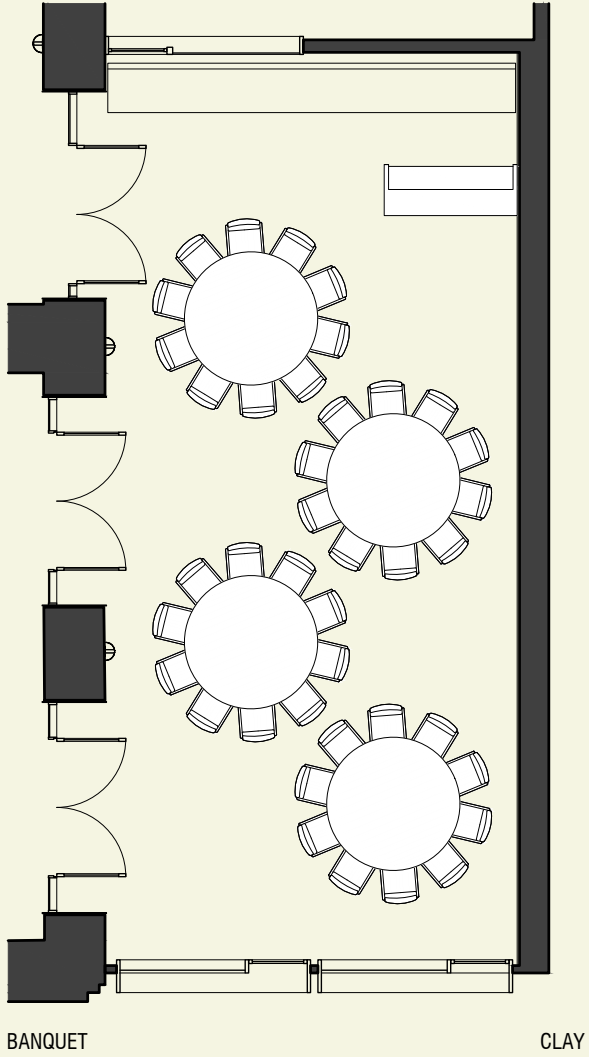




Capacity: 48



Capacity: 30



Capacity: 32



# KILN

Perched atop the hotel is Kiln, our kitchen and bar helmed by Mitch Orr. Here, panoramic views mix with the ambiance designed by Fiona Lynch and her eponymous studio. Kiln reflects an elevated sense of place in a setting built for casual attitudes. Two terraces with retractable roofs allow for open-air dining, while our more relaxed interior dining nooks welcome guests in all weather conditions. Open flames, gorgeous cocktails and nightly DJ rotations complete the energy of this very special space. We can offer exclusive use for events for lunch and dinner up to 108 seated or 200 cocktail style.





















KILN






# ROOMS





A photograph of a modern hotel room interior. In the foreground, a bed with a wooden headboard and a striped blanket is visible. In the background, a green sofa sits under a large window with a brick wall section. A wooden table and chairs are positioned near the sofa. The room has a clean, contemporary design with light-colored walls and a wooden floor.

Ace Hotel Sydney is a 250-room hotel housed in Surry Hills' historical Tyne Building. An active commons for culture, commerce, art and community, Ace Sydney is the ideal place to create custom packages for housing groups and wedding parties of all sizes.















# SUITES



## **SUITE:** 49 sq m

For when you want to dream big but keep the guest list tight. The Suite, featuring Flack Studios interior design, overlooks the lush Eastern Suburbs and rooftops of Surry Hills and is the spot to host your 10 best. Bar and catering options available upon request.

## **ACE SUITE:** 78 sq m

For private celebrations and tightly curated guest lists we offer The Ace Suite. Featuring Flack Studios interior design, this spacious suite overlooks the lush Eastern Suburbs and rooftops of Surry Hills. Set an intimate scene for up to 20, with an in-room kitchenette and bar counter. Catering options available upon request.



# SOCIAL EVENTS

We believe in celebrations of all sizes – there’s no reason too big or too small to mark the moment. Our stunning gathering spaces from level one to the rooftop are well-equipped to host all manner of special occasions, from birthday bashes and big anniversaries to cosy friend dinners and rollicking after-parties. Offering flexible seating accommodations and custom catering options, we’ll execute every detail to a T. If you come with an idea, chances are we can make it happen.

EVENT SPACE	KINGS TABLE	U SHAPE	ROUNDS	COCKTAIL	SEATED
BRICK	52	36	90	150	
CLAY	22	22	40	50	
TYNE	22	22	40	40	
GOOD CHEMISTRY				50	30
THE LIBRARY				35	24
ACE SUITE				20	
SUITE				10	



# CORPORATE EVENTS

If it’s important to you, it’s important to us. Our flexible event rooms are well-equipped to host big presentations, seminars, company lunches, team-building events, ceremonies and more. Gather groups large and small together in our inspiring spaces to exchange ideas, plan and create – we’ll take care of all the rest.

EVENT SPACE	KINGS TABLE	BOARDROOM	U SHAPE	THEATRE	CLASSROOM
BRICK	52	40	36	120	63
CLAY	22	22	22	46	36
TYNE	22	22	22	46	36





# WEDDINGS AT ACE



# WEDDINGS AT ACE HOTEL SYDNEY

We love weddings. And every wedding at Ace Hotel is as magical and unique as you are. A departure from the traditional, weddings at Ace Hotel Sydney are a creative celebration of you, your love and your singular vision. Each element can be addressed individually and customised, from the menu and music to decoration, and you can bring in your own creatives to work alongside our passionate team of experts. Our flexible spaces offer opportunities to hold your ceremony and reception in a number of special places throughout the hotel, or aim high and take it to the roof, letting Surry Hills handle the scenery.

Everyone is welcome to dream big and celebrate their love here at Ace. We're radically inclusive and open to everyone and every kind of love from across the world. Whether you're looking for a relaxed, intimate affair or want to go full bells and whistles, we're here to make sure your Big Day goes without a hitch and that you can ride out into eternal blissville with The One.

EVENT SPACE	KINGS TABLE	ROUNDS	COCKTAIL
BRICK	52	90	150
CLAY	22	40	50
TYNE	22	40	40





# THE BIG DAY PACKAGE

## EVENING WEDDING

STARTING FROM \$220 PER PERSON

EVENT SPACE FOR 5 HOURS

- Arrival Cocktail
- Three-course shared family feast or 5 hour canapés bundle
- 5 hour Ace beverage package
- Tea and Coffee
- Ace furniture package: Chairs, tables, crockery, cutlery and white napkins
- Personalised menus for the table

## DAYTIME WEDDING

STARTING FROM \$185 PER PERSON

EVENT SPACE FOR 5 HOURS

- Arrival Cocktail
- Three-course shared family feast or 4 hour canapés bundle
- 4 hour Ace beverage package
- Tea and Coffee
- Ace furniture package: Chairs, tables, crockery, cutlery and white napkins
- Personalised menus for the table











# FAQ

Some commonly asked questions are listed for you below, feel free to reach out to us to ask any other questions you may have.

## Hotel Tour

A 3D and 360 image tour of the hotel and event spaces can be seen [here](#).

If you would like to view the facilities, please don't hesitate to make contact, we'd be more than happy to show you through.

## Reserve The Event Space

As discussed with you the space is available for your proposed date, however please note that we are not holding any space for you at this stage. If you are keen to proceed, then please let us know as soon as you can and we will send you your personalised agreement, terms and conditions and deposit information.

## Deposit and Payments

Once you have confirmed you are keen to proceed with your event, Ace Hotel will issue you with an electronic agreement, at which time you will have up to 5 days to sign and return with your initial deposit.

- The deposit, which starts at 25%, is dependent on the start date of your event.
- Your second deposit will be due dependent on the start date of your event.
- Full prepayment will be due 45 days prior to your event.

-Sundays and public holidays incur a 15% surcharge.

-All prices are including 10% GST.

## Security

Security is required for all functions that exceed 3 hours where there will be consumption of alcohol. The cost for security will be paid by the client.

## A1 Audio Visual & Digital Media

A1 is Ace Hotel Sydney's preferred on-site AV partner who will design and produce events, offering services across audio visual production, content creation and event technology.

For more information talk to:

Tim Lynden

+61 421 166 932

[tim@av1.com.au](mailto:tim@av1.com.au)



# Ace Hotel Sydney

47-53 Wentworth Ave, Sydney  
[acehotel.com/sydney](http://acehotel.com/sydney)  
[events.syd@acehotel.com](mailto:events.syd@acehotel.com)