

# EXPERIENCE MEETINGS

RADISSON BLU PLAZA HOTEL SYDNEY  
27 O'Connell Street, Sydney  
NSW, 2000, Australia  
T: +61 2 8214 0292  
E: [events.sydney@radisson.com](mailto:events.sydney@radisson.com)  
W: [radissonblu.com/plazahotel-sydney](http://radissonblu.com/plazahotel-sydney)

# MAKE THE ORDINARY EXTRAORDINARY

Housed within a heritage-listed building, the boutique style, five-star Radisson Blu Plaza Hotel Sydney is one of the most desired intimate event venues in the city.

Located in the central business district and within easy reach of many of the city's famous sights, the hotel creates outstanding events of relaxed elegance, style and perfection.

Radisson Blu's function and meeting rooms, refreshed and modernised as part of a \$13.5 Million redesign, provide more than 500m<sup>2</sup> of space, ideal for corporate business meetings, board meetings, social events, private dinners or cocktail functions from 2 to 200 guests.

The team at Radisson Blu Plaza Hotel Sydney can tailor packages to suit your needs along with creating customised audio visual solutions, the latest conferencing technology and providing a range of theming options. Complimentary wireless internet access makes meetings a breeze.

**Radisson** **BLU**  
PLAZA SYDNEY



# EVENT SPACES & CONCEPTS

## MARBLE ROOM

Located on the Lower Ground level, this contemporary meeting room can host up to 180 people theatre style. This flexible space is divisible by three and opens onto the pre-function area, which complements the room and is bathed in natural light. The room features beautiful silk panelling on the walls, is a total of 196m<sup>2</sup> and a ceiling height of 3.5m.

## PRESS ROOM

Also located on the Lower Ground level, this modern and stylish room is suitable for up to 80 people theatre style. The room can be divided into three and opens onto the pre-function area which is naturally lit and pairs with the meeting space perfectly. The room features uniquely designed light boxes enhancing the overall room ambience. It is a total of 97m<sup>2</sup> and has a ceiling height of 2.7m.

## PRE-FUNCTION AREA

The Pre-Function area adjoins both the Marble and Press rooms on the Lower Ground level and offers 135m<sup>2</sup> of space and has a ceiling height of 3.5m. This area facilitates a direct street entrance via Pitt street and is also accessible via a staircase to the Lobby level or lift access from all floors of the hotel.

## SIR WARWICK FAIRFAX ROOM

Located on the Mezzanine level, this heritage-listed room is an original part of the building and has been restored to its former glory. It is 35m<sup>2</sup> in size and has a ceiling height of 3.5m. The unique, intimate room is filled with natural light and is an ideal venue for executive meetings or private formal dining for up to 12 people boardroom style.

## SIR JAMES FAIRFAX ROOM

This impressive heritage room, equal in grandeur to the Sir Warwick Fairfax Room is located on the Mezzanine level and has also been restored to capture the charm of a bygone era. It is 48m<sup>2</sup> in size with a ceiling height of 3.5m and hosts up to 30 people theatre style. With ample natural light, this space is ideal for executive meetings, intimate cocktail functions or private dining.

## LADY FAIRFAX ROOM

The Lady Fairfax Room on the Lobby Level is available for private events from 12pm daily. A naturally sunbathed room overlooking Pitt St, it is perfect for any reception, private dining, bridal shower high tea or baby shower. The room caters to 70 people for private dining.



## INNOVATIVE MEETING INGREDIENTS

Radisson Blu's boldly innovative Experience Meetings concept is designed to stylishly harmonise every individual meeting detail. Developed by experts – and honed by years of hosting every kind of meeting and event – Experience Meetings by Radisson Blu brings together the best of world-class services and products – plus our Yes I Can!<sup>SM</sup> people – ensuring you meet with success. Every time. Everywhere.

## BRILLIANT BRAIN FOOD

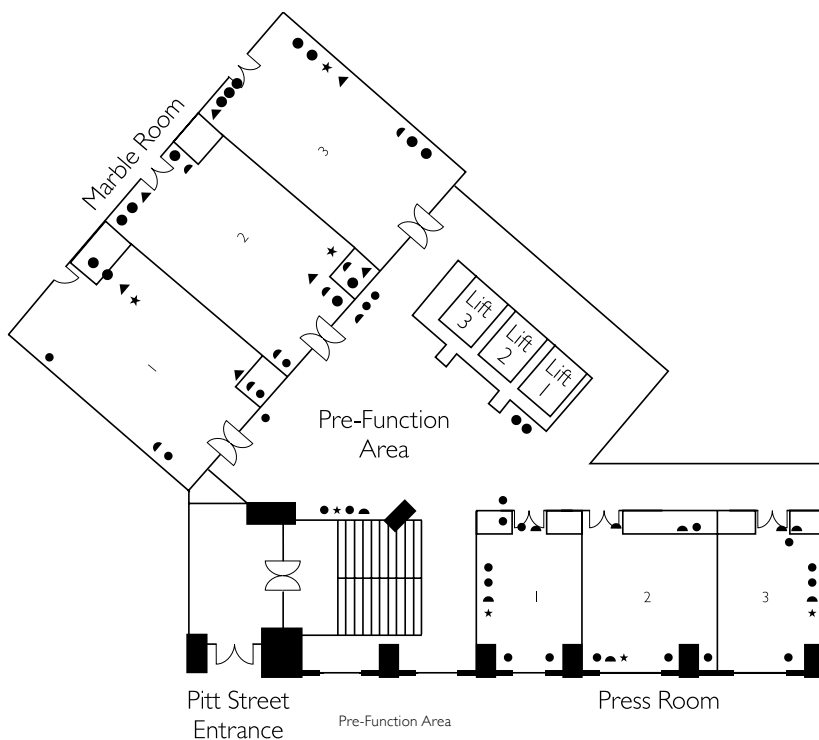
Brain Food is Radisson Blu's award-winning food and beverage solution for memorable meetings. Created by experts, our innovative menu guarantees optimum nutrition for maximum focus and truly productive participation. From start to finish we use fresh local ingredients.

## THINKING INSIDE AND OUTSIDE THE BOX

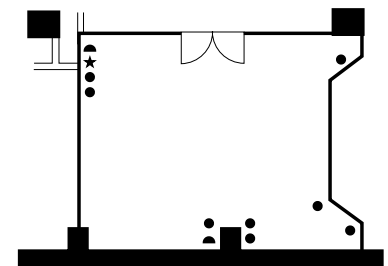
Experience Meetings' special Brain Box break-out room is another Tru Blu innovation. It's designed to boost creativity and active engagement. Sensory and fun, with bright colors and walls to write on. High tech sharing plus flexible furniture and lighting. Thinking inside and outside the box. All working to make meetings more brilliant.

Room	Square M	Banquet	Classroom	U-Shape	Theatre	Cocktail	Cabaret	Open Boardroom	Closed Boardroom	Ceiling Height M
Marble Room	196	120	90	54	180	200	88	48	62	3.5
1	66	40	36	21	45	50	32	16	20	3.5
2	67	40	36	21	45	50	32	22	26	3.5
3	63	40	36	21	45	50	32	22	26	3.5
2 Parts		60	48	30	98	100	48	36	44	3.5
Press Room	97	60	45	39	80	80	40	34	44	2.7
1	32	20	12	9	20	20	16	10	12	2.7
2	32	20	12	9	20	20	16	14	16	2.7
3	32	20	12	9	20	20	16	10	12	2.7
2 Parts		40	24	21	50	50	32	22	28	2.7
Sir James Fairfax Room	35	30	18	15	30	30	24	20	24	3.5
Sir Warwick Fairfax Room	35	-	-	-	-	-	-	10	12	3.5
Lady Fairfax Room		70	-	38	80	120	60	50	60	3.5
Lady Fairfax 1/2 Room		20	-	-	40	50	16	24	24	3.5
Pre-Function Area	135	-	-	-	-	120	-	-	-	3.5

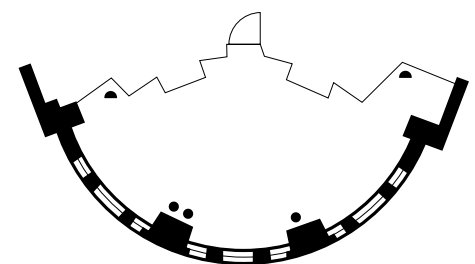
## LOWER GROUND



## MEZZANINE LEVEL



Sir James Fairfax Room



Sir Warwick Fairfax Room

- Cabaret style is based on 8 pax per table
- Lady Fairfax only available for functions starting at 12pm. using existing seating
- Wedding (8 tables of 10 plus a head table for 9 pax and dancefloor)
- Stage Size - 1.81 x 2.40m per pieces, we have 4 pieces
- Based on maximum capacity without any AV or stage

KEY	
●	DOUBLE-SOCKET POWER POINT
◆	SINGLE-SOCKET POWER POINT
▲	TELEPHONE SOCKET
★	AERIAL SOCKET
▲	MICROPHONE SOCKET





## GETTING HERE

### BY CAR

Valet parking is available for hotel guests, taxis are available from the main entrance and there are many public car parks in the surrounding streets

### BY TRAIN

Wynyard station, Martin Place and Circular Quay Stations are all within 5 minutes walk

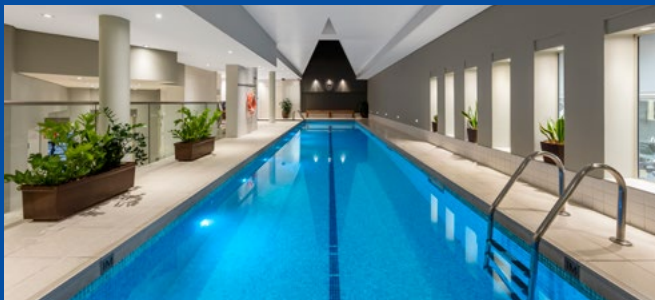


## ROOMS & SUITES

The hotel's 364 spacious and stylish guestrooms are some of the largest in the city.

All rooms feature a generous sized bathroom with separate shower and extra deep tub, bathrobes, deluxe hairdryer, deluxe bedding, pillow menu, flat screen television, in-room movies, ipod dock, large moveable desk with ergonomic chair, direct control air conditioning and heating, mini bar, 24 hour room service, tea and coffee making facilities, iron and ironing board, in-room safe and a daily newspaper.

Radisson Blu Hotel Sydney proudly offers a 100% smoke-free environment.



## HOTEL FEATURES

- Fast free WiFi internet
- Business Class Lounge
- Fitness & Relaxion Centre
- Restaurants & Bars
- 100% Smoke free

