

Imagine your next event on...

Shark Island



Image credit: Eitan Rohoff / DNSW



The best way to experience Sydney Harbour is from the islands.

The historic and cultural heart of the harbour and the perfect location for your next event.

The Sydney Harbour Islands
- Our best kept secret!



Image credit: K McGrath / OEH

Image credit: Ethan Rohloff / DNSW



Image credit: David Finnegan / OEH



Shark Island

Sweeping views of the harbour and perfect for an intimate island event.



Image credit: K McGrath / OEH



Image credit: Captain Cook Cruises

A visit to Shark Island is a special experience with its spectacular harbour and city views and its sense of isolation and tranquillity. It boasts gentle slopes and accessible rock pools and is an ideal location for your next event.

Located just off Rose Bay, Shark Island measures just 250 metres by 100 metres, with lush grassy areas and a heritage pavilion and amazing 360 degree views of Sydney Harbour. The island is the perfect setting for a harbour side event. Shark Island is the most well-known of the harbour islands due to its regular ferry service.

Originally named Boam-billy by the local Aboriginal people, the island has a fascinating history which dates back to the 1830's when it was established as a classic recreational parkland. The large Edwardian pavilion was constructed in 1911.

Today, your guests can travel to the island and spend time enjoying a private party or special events such as food & wine festivals, art exhibitions and music events.

Shark Island also plays an important role in the celebration of public events such as the New Year's Eve fireworks, Australia Day celebrations and the start of the Sydney Hobart Yacht race on Boxing Day.

Shark Island

Location



Shark Island

Venue Information



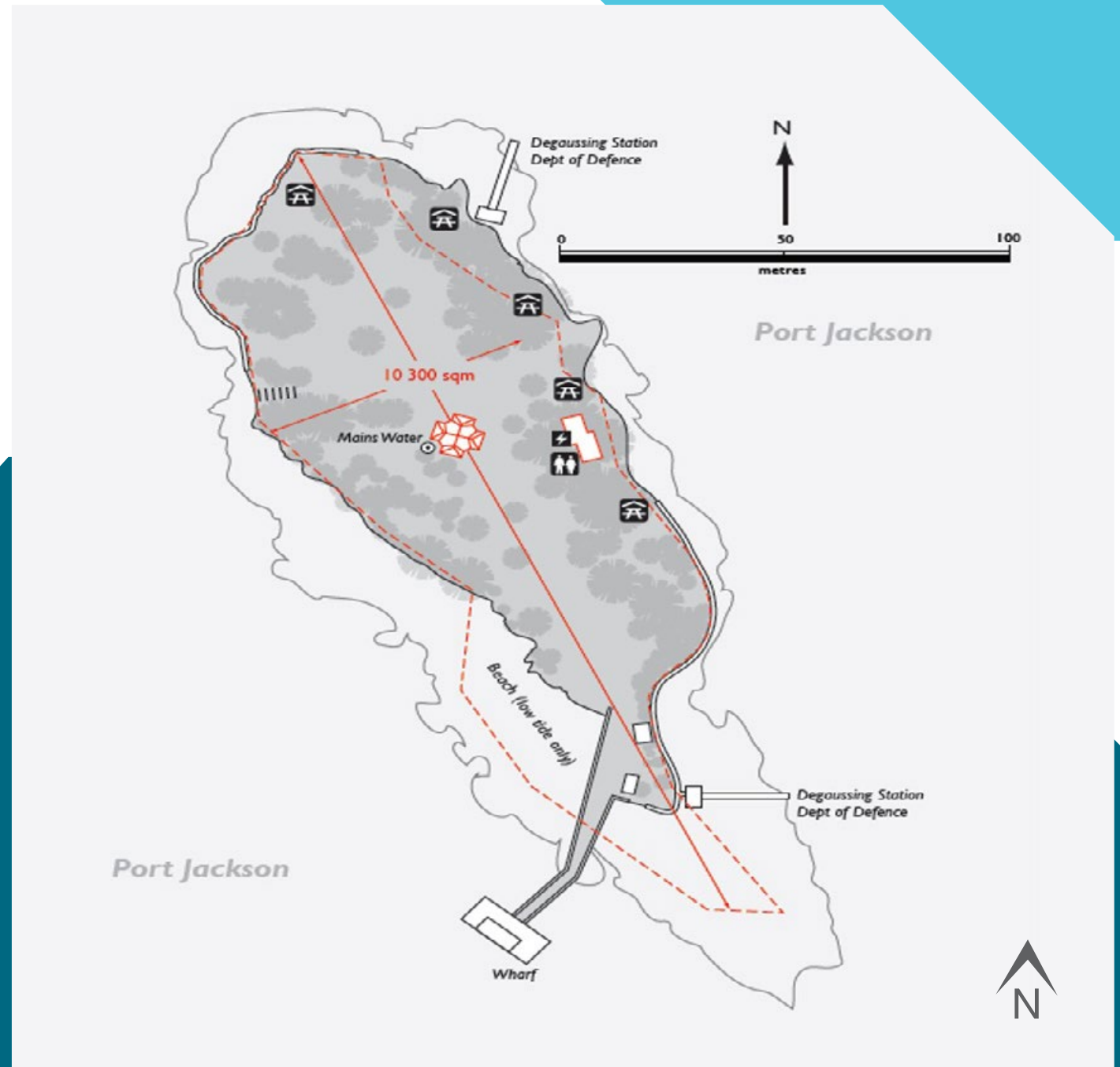
Image credit: K McGrath / OEH

Venue capacity:	800 pax
Hours of use:	8am - 10pm Additional hours may be approved on application Noise restrictions may apply.
Equipment & Structures:	Edwardian Pavilion circa 1911 5 picnic shelters and bench seating.
Toilets:	5 female 2 male plus 1 urinal Portaloos are required for most events.
Power:	8 by 10 amp GPO's / 1 three-phase 20 amp (5 pin)
Water:	Mainland supplied drinking water.
Wheelchair access:	Difficult due to wharf access.
Transport/ Access:	Provide own water based transport. Private ferry operators can provide a range of options from small to large capacity.
Food & Beverage:	Catering available from your own choice of gold licensed caterers.
Waste:	There are no bins onsite. Waste bins must be brought onto site and all waste removed from the site post event.

Aboriginal name:
Boambilly or Bo-a-millie

Shark Island

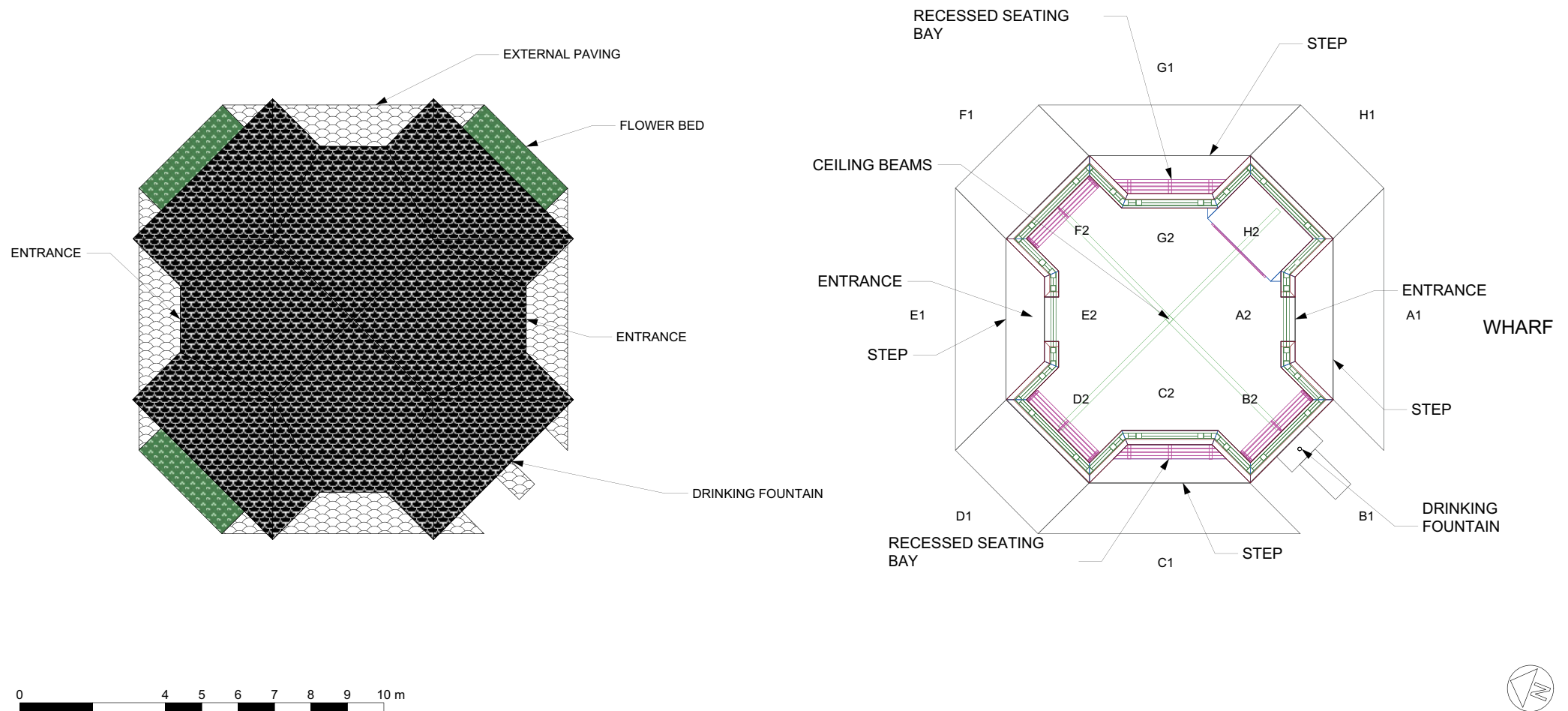
Site Map



Pavilion Plan View 1



Image credit: K McGrath / OEH

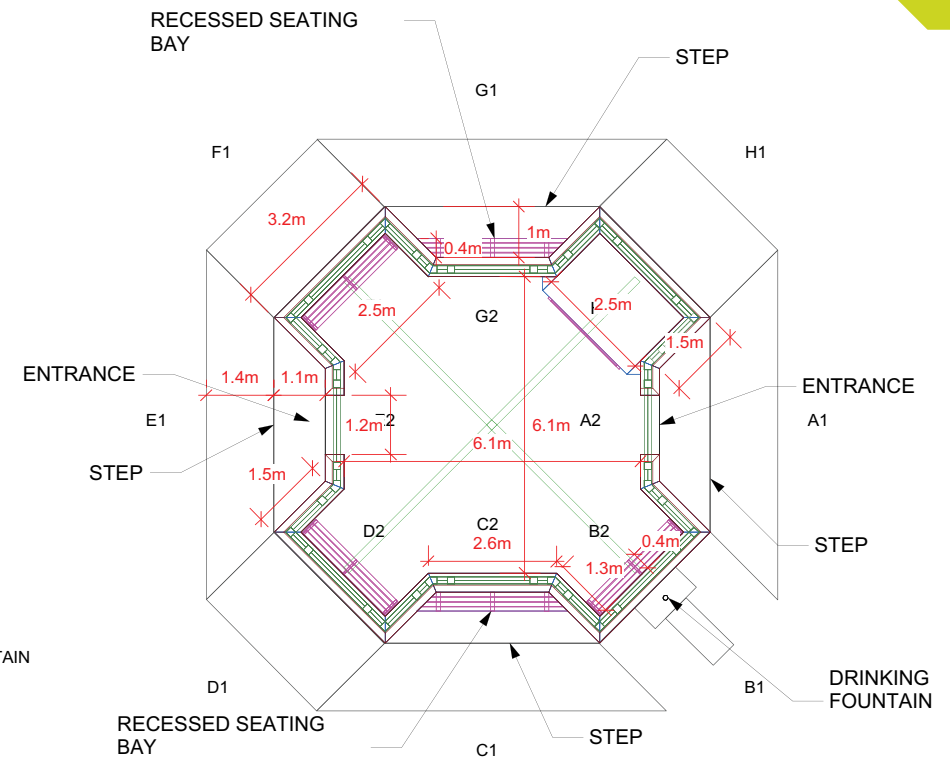
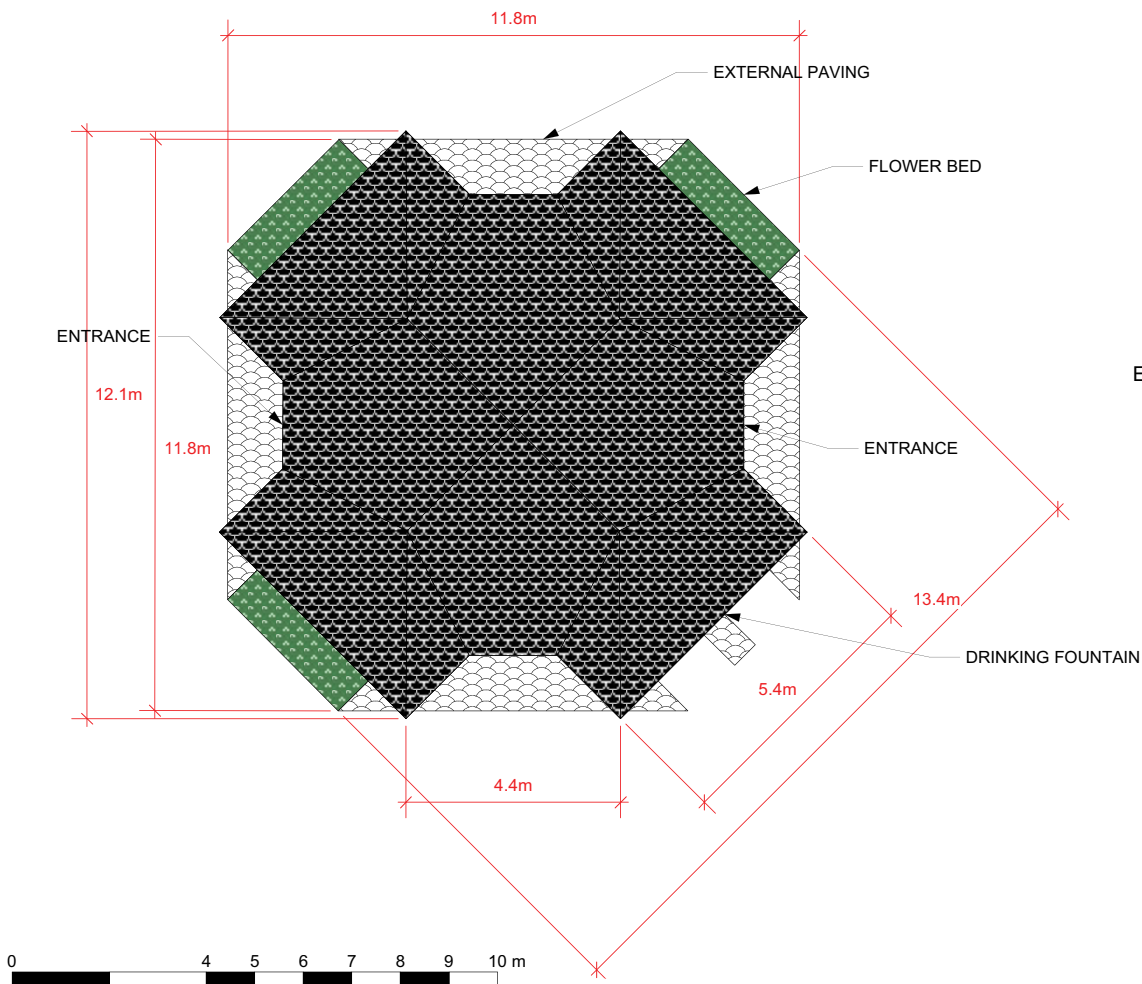


Shark Island

Pavilion Plan View 2



Image credit: Stuart Cohen

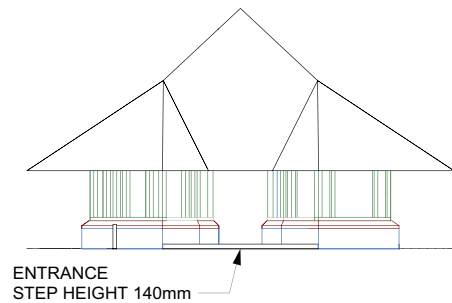


Shark Island

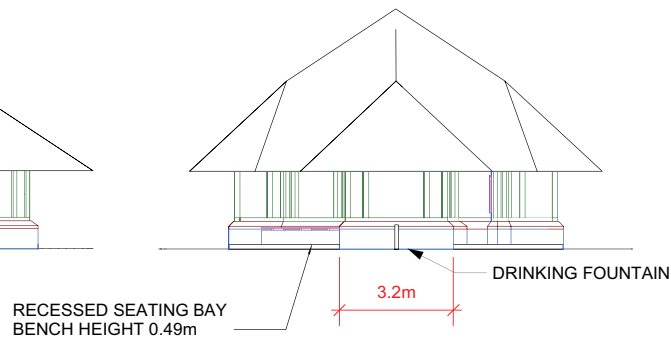
Pavilion Elevation



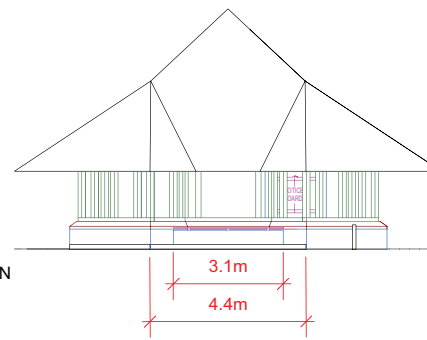
Image credit: K McGrath / OEH



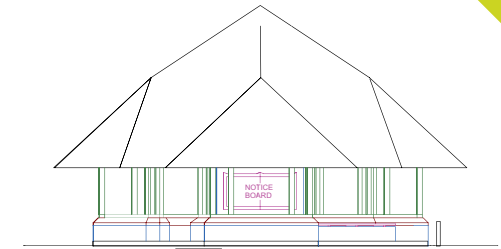
ELEVATION A1



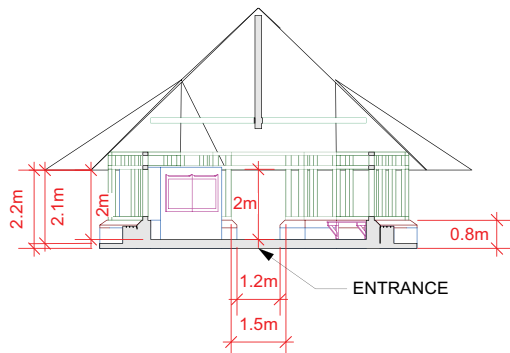
ELEVATION B1



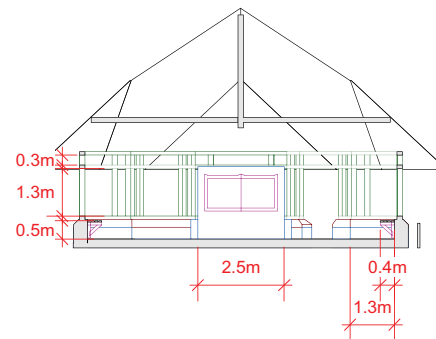
ELEVATION C1



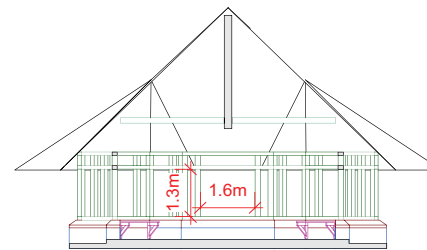
ELEVATION D1



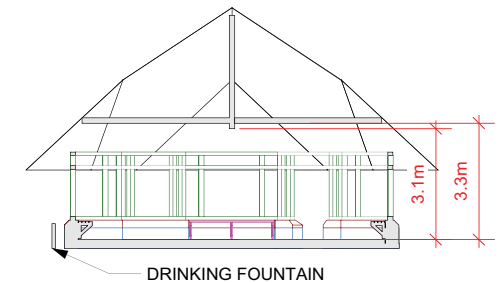
ELEVATION A2



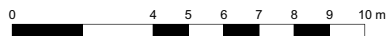
ELEVATION B2



ELEVATION C2



ELEVATION D2



INTERNAL DIMENSIONS:
OVERALL WIDTH 6.1m x 6.1m
FLOOR TO CENTRAL BEAM 3.1m
FLOOR TO CROSS BEAM 3.3m

Book Now



To book, learn more or discuss your next event, contact:
Events and Venues Unit
NSW National Parks and Wildlife Service
Tel: (02) 9585 6570
Email: events.nationalparks@environment.nsw.gov.au